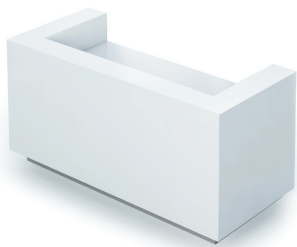
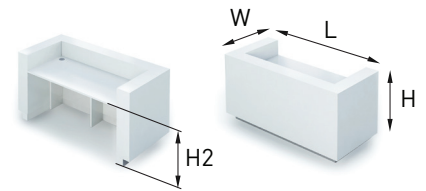
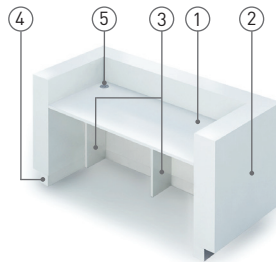


# ICE

## TECHNICAL INFORMATION



L 2000  
W 800  
H 1025  
H2 740



### Desktop (1)

- 25 mm MFC (melamine) with 2 mm ABS edges;
- Dimensions: 1600x700.

### Modesty panel unit (2)

- MDF covered with enamel (based on polyurethane resins);
- Smooth mat silk surface (30% glossy) or smooth high-gloss polished surface (100% glossy);
- 45° panel connections with no edging.

### Modesty panel and desktop supports (3)

- 25 mm MFC (melamine) with 2 mm ABS / thin edging.

### Plinth base (4)

- Exterior part (front and side facades) pressed with polished aluminium colour HPL.

### Grommets (5)

- Semi-transparent matte neutral colour plastic in grey outline;
- Ø 80 mm.

## MATERIALS

Melamine:



M1

Enamel:



U13

U11

## FEATURES

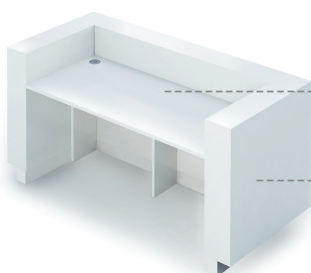
- Mate silk touch or glossy polished enamel MDF covering
- Two grommets for wire management
- Easy assembling

## GUARANTEE

- 5 year

## ORDERING EXAMPLE

### Code structure



M1



U13

RNS204 - M1 U13

Product

Melamine

Enamel