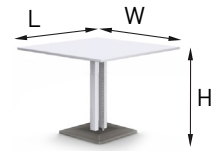


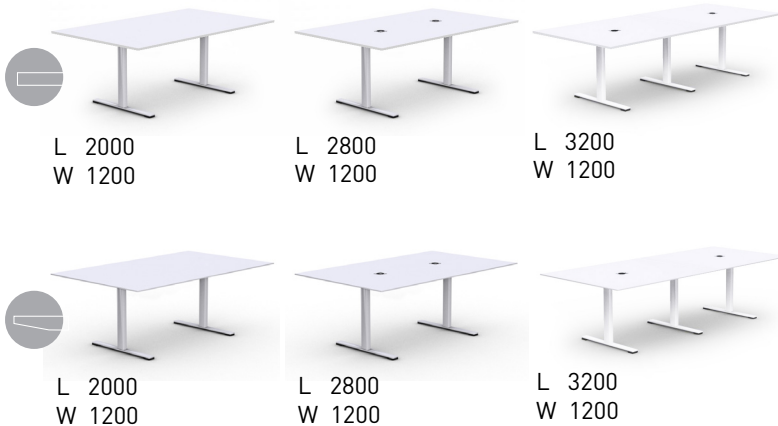
JAZZ

TECHNICAL INFORMATION



Meeting tables with or without power sockets and a metal cable tray

H 740



Height adjustable meeting tables with concrete base, with or without power socket and spiral voltage-cable

L 1200
W 1200
H 710-1210



Desktop composition

- 25 mm MFC covered with melamine or laminate;
- With or without a cut out for wire management.

Desktop edge

- Plain (melamine) desktop: 2 mm ABS edges;
- Sloping (laminate) desktop: edge painted in white or black colour.

Power sockets (included)

- By "Gotessons" (EU, UK, FR);
- 1 socket for 230 V and 4 holes for cable guides.

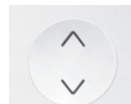
Plain edge
(melamine)



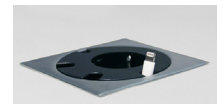
Sloping edge
(laminate)



Height adjustment
button integrated
in the desktop



Power socket
integrated into
desktop



Meeting tables with or without power sockets and a metal cable tray

Metal frame

- Metal "L" profile: 50x50 mm;
- Powder coated metal.

Leg column

- Dimensions: 50x80x686 mm;
- Powder coated metal, colours: black or white.

Leg base

- Leg base made of 12 mm thick steel sheet;

- Dimensions: 70x800x30 mm;
- Leg base has height levelling feet;
- Levelling feet covers made of black lacquered MDF.

Power sockets (included)

- By "Gotessons" (EU, UK, FR);
- 1 socket for 230 V and 4 holes for cable guides.

Cable tray (included)

- Tray hides electric installation and power sockets;
- Dimensions: 920/1120x190x52 mm;
- No tools required to open;
- Available in white and black colours.

Height adjustable meeting tables with concrete base, with or without power socket and spiral voltage-cable

Metal frame

- Metal profile: 50x50 mm;
- Powder coated; colours: white or black (the same as the legs' colour).

LINAK DL5 lifting column

- Two motors and telescopic frame;
- Soft start and soft stop;
- Velocity speed: up to 38 mm/sec;
- Stroke length: 500 mm;
- Support 80 kg functional load.

Concrete base

- Dimensions: 600x600x45 mm;
- Colour – always grey (natural concrete);
- Water resistant / impregnated;
- Weight: 29 kg.

Electronic data power unit

- Input: 110-240 V;
- Frequency: 50/60 Hz;
- Output: 18 V;
- Power Plug: 2-pol;
- Energy use standby: 0,01 W;
- Operating Cycle: 1 minute on, 9 minutes off.






Cable tray (included)

- The tray hides electric leg's cable installation;
- No tools required to open;
- Powder coated; white or black (the same colour as the frame).

Spiral electric cable

- 230 V, 1.5 m length cable;
- Optional: EU, UK, FR;
- Included;
- Colour: white or black (the same as the legs' colour);
- Fixed with metal holders to the top and bottom; holders are the same colour as the cable.

MATERIALS

Laminate:	
	M1
Melamine:	
	M1
Natural Concrete (base):	
	C1
Metal:	 
	E A

FEATURES

- Design by Christina Strand and Niels Hvass | Denmark
- Desk is equipped with two motors
- LINAK DL5 lifting columns and telescopic frame
- Different desktop types with plain or sloping edge

QUALITY STANDARD

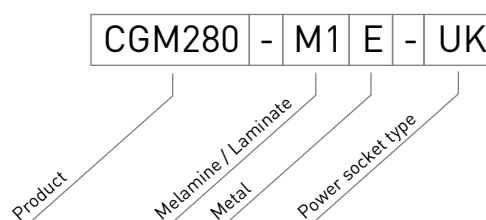
- LST EN 14073-2:2004
- LST EN 527-1:2011
- LST EN 527-2:2003

GUARANTEE

- 5 year

ORDERING EXAMPLE

Code structure



Optional



Spiral internet cable attached with metal fittings



Power socket blocks