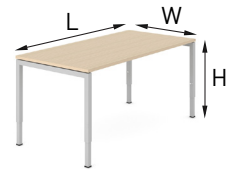


NOVA H desks



H 620-850



L 1200; 1400; 1600; 1800
W 800

FEATURES

- Manual height adjustment according to individual needs
- Easy to assemble and disassemble - "metal to metal" construction
- Just one tool for assembling (DIN911 S5)

QUALITY STANDARD

- LST EN 527-1:2011
- LST EN 527-2:2003
- All desks meet the requirements of the LST EN 527-3:2003 standard

TECHNICAL INFORMATION

Desktop

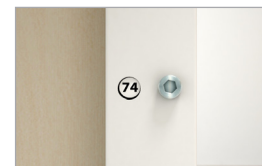
- 25 mm MFC (melamine) with 2 mm ABS edging;
- 10 mm gap between the legs and the desktop;
- 40 mm gap between the desktops in back to back benches (depth of benches – 1440/1640).

Metal beam

- Metal tube - 40x20 mm;
- With welded metal plates for leg fixing;
- Powder coated metal, colour matches the legs.

Legs

- Welded metal tube - 40x40 mm;
- Powder coated metal;
- Plastic feet (without levelling);
- Manual height adjustment (fixed with bolts).



MATERIALS

- Melamine: P (birch), T (beech), D1 (whitened oak), D2 (amber oak), U (walnut), M1 (white), N (grey);
- Metal: E (white), M (metallic), T1 (dark grey), A (black).

GUARANTEE

- 5 years

Desktop type



Plain desktop



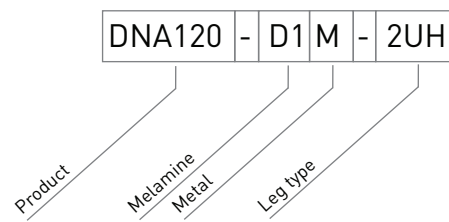
Desktops with a scallop for wire management



Desktops with a cut-out for grommet and wire management

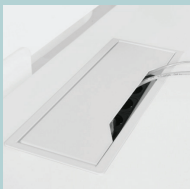
ORDERING EXAMPLE

Code structure

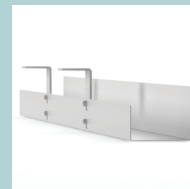


Must be ordered

(for desktop with cut-out)

Metal grommet:
317x119 mm,
H=27 mm

Optional

Power socket
blocks

Cable trays

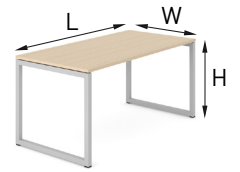


Cable clips



Cable ducts

NOVA 0 desks



H 740



L 1200; 1400; 1600; 1800
W 700; 800



L 1200; 1400
W 600



L 2400; 2800; 3200; 3600
W 800



L 1200; 1400; 1600; 1800
W 800



L 1200; 1400; 1600; 1800
W 1440; 1640



L 1536; 1336
W 595



L 2400; 2800; 3200; 3600
W 1440; 1640



L 1200; 1400; 1600; 1800
W 1440; 1640



L 1400; 1600; 1800
W 1200



L 800
W 600

Possibility to extend the length of the 2 or 4 desk bench by ordering supplementary units. We recommend to connect up to 6 back to back units.